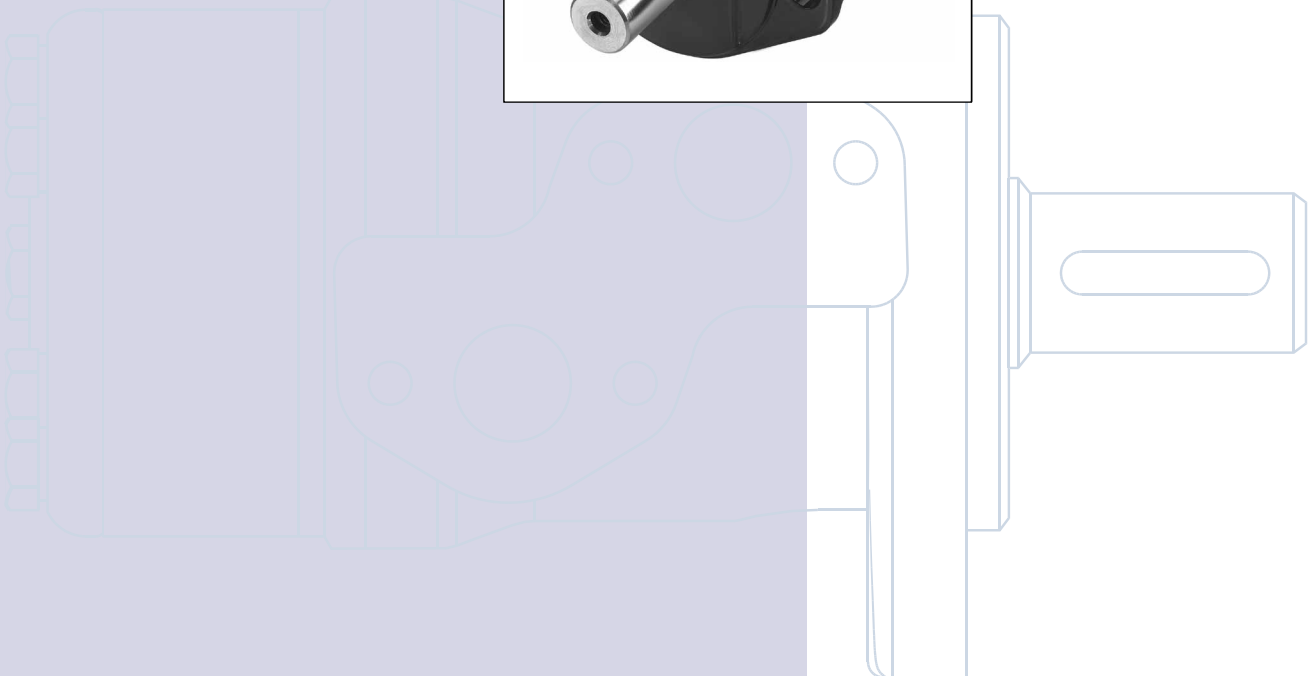




Orbital Motors Type VMP

Technical Information



Revision View

Date	Page	Changed	Revision
May 2013	All	First edition	AA



F301 245

A Wide Range of Orbital Motors

Sauer-Danfoss is a world leader within production of low speed orbital motors with high torque. We can offer more than 3000 different orbital motors, categorised in types, variants and sizes (incl. different shaft versions).

The motors vary in size (rated displacement) from 8 cm³ (0.50 in³) to 800 cm³ (48.9 in³) per revolution.

Speeds range up to approx. 2500 min⁻¹ (rpm) for the smallest type and up to approx 600 min⁻¹ (rpm) for the largest type.

Maximum operating torques vary from 13 Nm (115 lbf-in] to 2700 Nm (24.000 lbf-in] (peak) and maximum outputs are from 2.0 kW (2.7 hp] to 70 kW (95 hp].

Characteristic features:

- Smooth running over the entire speed range
- Constant operating torque over a wide speed range
- High starting torque
- High return pressure without the use of drain line (High pressure shaft seal)
- High efficiency
- Long life under extreme operating conditions
- Robust and compact design
- High radial and axial bearing capacity
- For applications in both open and closed loop hydraulic systems
- Suitable for a wide variety of hydraulics fluids

© 2013 Sauer-Danfoss. All rights reserved.

Sauer-Danfoss accepts no responsibility for possible errors in catalogs, brochures and other printed material. Sauer -Danfoss reserves the right to alter its products without prior notice. This also applies to products already ordered provided that such alterations can be made without affecting agreed specifications. All trademarks in this material are properties of their respective owners. Sauer-Danfoss, the Sauer-Danfoss logotype, the Sauer-Danfoss S-icon, PLUS+1™, What really matters is inside® and Know-How in Motion™ are trademarks of the Sauer-Danfoss Group.

Front cover illustrations: F500 216, Drawing:

A Wide Range of Orbital Motors

(continued)

The programme is characterised by technical features appealing to a large number of applications and a part of the programme is characterised by motors that can be adapted to a given application. Adaptions comprise the following variants among others:

- Motors with corrosion resistant parts
- Wheel motors with recessed mounting flange
- OMP, OMR- motors with needle bearing
- OMR motor in low leakage version
- OMR motors in a super low leakage version
- Short motors without bearings
- Ultra short motors
- Motors with integrated negative holding brake
- Motors with integrated flushing valve
- Motors with speed sensor
- All motors are available with black finish paint

The Sauer–Danfoss LSHT motors are used in the following application areas:

- Construction equipment
- Agricultural equipment
- Material handling & Lifting equipment
- Forestry equipment
- Lawn and turf equipment
- Special purpose
- Machine tools and stationary equipment
- Marine equipment

Survey of Literature with Technical Data on Sauer-Danfoss Orbital Motors

Detailed data on all Sauer-Danfoss orbital motors can be found in our motor catalogue, which is divided into more individual subcatalogues:

- General information on Sauer-Danfoss orbital motors: function, use, selection of orbital motor, hydraulic systems, etc.
- Technical data on small motors: OML and OMM
- Technical data on medium sized motors: OMP, OMR, OMH and OMEW
- Technical data on medium sized motors: DH and DS
- Technical data on medium sized motors: VMP and VMR
- Technical data on large motors: OMS, OMT and OMV
- Technical data on large motors: TMT

A general survey brochure on Sauer-Danfoss orbital motors gives a quick motor reference based on power, torque, speed and capabilities.

Contents

Introduction 4
 VMP-Features 4
 Speed, Torque and Output..... 4
 Versions..... 6
 Code Numbers 7
 Technical data for VMP with 25 mm and 1 in cylindrical shaft 8
 VMP with High Pressure Shaft Seal (HPS) 9
 Pressure Drop in Motor 9
 Oil Flow in Drain Line 10
 Direction of Shaft Rotation 10
 Technical Data 11
 Function Diagrams..... 12
 Shaft Version 16
 Port Thread Versions..... 17
 Manifold Mount 17
 Dimensions..... 18

Introduction

By introducing the VMP, Sauer- Danfoss is introducing the first Orbital Motor of a new Series. In order to meet the demands for motors that have the right duty cycle and efficiency capabilities for a given function, Sauer-Danfoss now has 3 Orbital Motor Series:

T-Series – The Highest Torque

Leading performance with a long lifetime makes light work of the heaviest duties. Offering pressure capability up to 350 bar [5076 psi] and high starting torque, the T-Series is the energy-efficient choice for the toughest working environments.

O-Series – The Flexible Choice

The O-Series is flexible beyond compare. Delivering premium power across the board, these motors cover small to large, medium to heavy-duty needs with pressure capability up to 275 bar [3990 psi]. Robust, reliable and designed to fulfill the latest emissions standards.

V-Series – The Core Solution

The V-Series is your quality benchmark in the medium duty market. Based on proven technology, these reliable motors will reduce your overall system costs while adding value to your machine. Perfect for many tasks.

VMP-Features

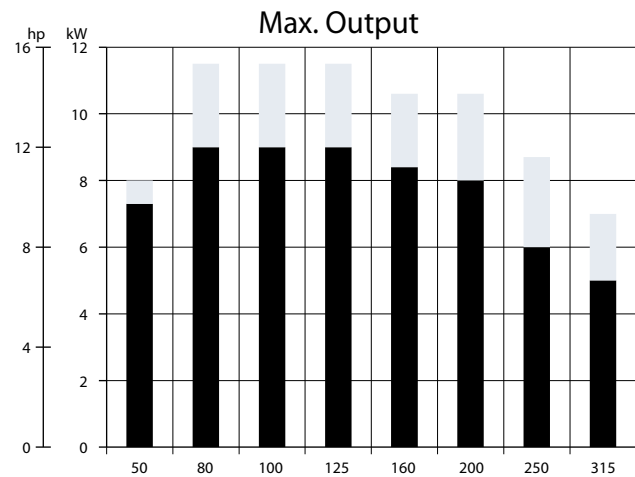
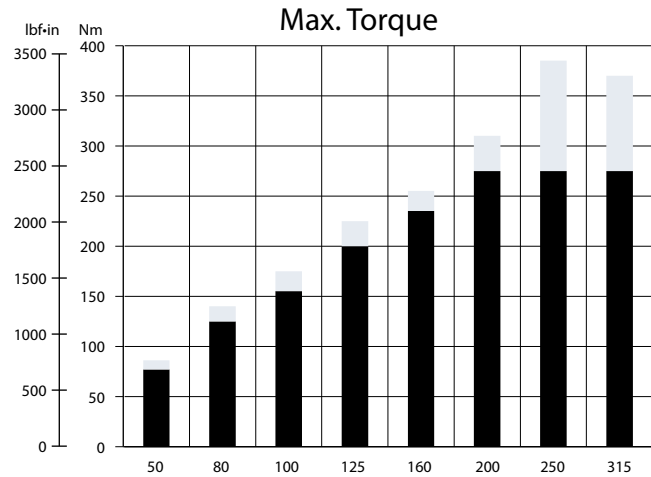
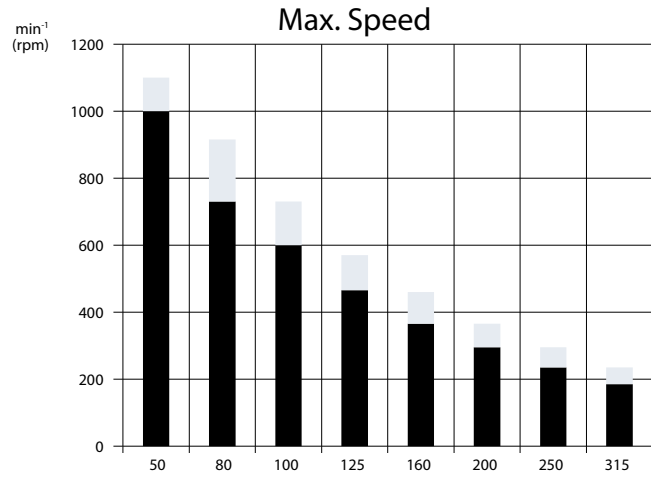
- High pressure shaft seal
- Proven orbital motor design
- 3-chamber motor design
- Suitable for medium and low duty

Speed, Torque and Output

The bar diagrams, see page 5, are useful for a quick selection of relevant motor size for the application. The final motor size can be determined by using the function diagram on page 12-15.

The function diagrams are based on actual tests on a representative number of motors from our production. The diagrams apply to a return pressure between 5 and 10 bar [75 and 150 psi] when using mineral based hydraulic oil with a viscosity of 35 mm²/s [165 SUS] and a temperature of 50°C [120°F]. For further explanation concerning how to read and use the function diagrams, please consult the paragraph "Selection of motor size" in the technical information "General" 520L0232.

Speed, Torque and Output



 Intermittent values
 Continuous values

P301 466

Versions

Mounting flange	Spigot diameter	Bolt circle diameter (BC)	Shaft	Drain connection	Port size	Metric version	1" version	Painted Black
2 hole oval flange (A2 - flange)	Ø 82.5 mm [3.25 in]	Ø 106.4 [4.20 in]	Cyl. 25 mm	Yes	G1/2	x		
				Yes	G1/2	x		x
			Cyl. 1 in	Yes	7/8-14 UNF		x	
				Yes	7/8-14 UNF		x	x

Code Numbers

DISPLACEMENT (cm ³)								Technical data – Page	Dimensions – Page
50	80	100	125	160	200	250	315		
11118244	11118245	11118246	11118247	11118248	11118249	11118250	11118251	8-11	17-19
11118253	11118254	11118255	11118256	11115010	11118257	11118258	11118259	8-11	17-19
11129680	11129681	11129683	11129692	11129693	11129716	11129717	11129718	8-11	17-19
11129860	11129861	11129872	11129873	11129874	11129875	1112976	11129877	8-11	17-19

Technical data for VMP with 25 mm and 1 in cylindrical shaft

Type		VMP	VMP	VMP	VMP	VMP	VMP	VMP	VMP	
Motor size		50	80	100	125	160	200	250	315	
Geometric displacement	cm ³ [in ³]	48.6 [2.97]	77.8 [4.76]	97.3 [5.95]	125.0 [7.65]	155.7 [9.53]	194.6 [11.91]	242.3 [14.83]	306.1 [18.73]	
Max. speed	min ⁻¹ [rpm]	cont.	1000	730	600	465	365	295	235	185
		int. ¹⁾	1100	915	730	570	460	365	295	235
Max. torque	N·m [lbf·in]	cont.	77 [680]	125 [1105]	155 [1330]	200 [1770]	235 [2090]	275 [2435]	275 [2435]	275 [2435]
		int. ¹⁾	86 [760]	140 [1240]	175 [1550]	225 [1990]	255 [2255]	310 [2745]	385 [3410]	370 [3275]
Max. output	kW [hp]	cont.	7.3 [9.8]	9 [12.1]	9 [12.1]	9 [12.1]	8.4 [11.3]	8 [10.7]	6 [8.0]	5 [6.7]
		int. ¹⁾	8.0 [10.7]	11.5 [15.4]	11.5 [15.4]	11.5 [15.4]	10.6 [14.2]	10.6 [14.2]	8.7 [11.7]	7 [9.4]
Max. pressure drop	bar [psi]	cont.	125 [1815]	125 [1815]	125 [1815]	125 [1815]	120 [1740]	115 [1670]	90 [1305]	75 [1090]
		int. ¹⁾	140 [2030]	140 [2030]	140 [2030]	140 [2030]	130 [1885]	130 [1885]	125 [1815]	100 [1450]
Max. oil flow	l/min [US gal/min]	cont.	50 [13.2]	60 [15.9]	60 [15.9]	60 [15.9]	60 [15.9]	60 [15.9]	60 [15.9]	60 [15.9]
		int. ¹⁾	55 [14.5]	75 [19.8]	75 [19.8]	75 [19.8]	75 [19.8]	75 [19.8]	75 [19.8]	75 [19.8]
Max. starting pressure with unloaded shaft	bar [psi]	10 [145]	10 [145]	10 [145]	10 [145]	10 [145]	7 [100]	7 [100]	7 [100]	
Min starting torque	at max. press drop cont. N·m [lbf·in]	68 [600]	110 [975]	135 [1195]	175 [1550]	210 [1860]	250 [2215]	245 [2170]	255 [2255]	
	at max. press.drop int. ¹⁾ N·m [lbf·in]	76 [675]	120 [1060]	150 [1330]	195 [1725]	225 [1990]	280 [2480]	340 [3010]	340 [3010]	

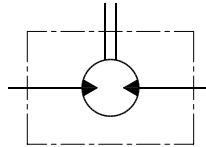
Type		Max. inlet pressure	Max.return pressure with drain line
VMP 50 - 315	bar [psi]	140 [2030]	140 [2030]
	bar [psi]	160 [2320]	160 [2320]

¹⁾ Intermittent operation: the permissible values may occur for max. 10% of every minute.

VMP with High Pressure Shaft Seal (HPS)

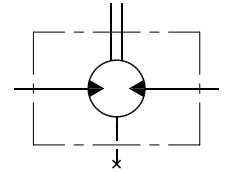
VMP with HPS and without drain connection:
 The shaft seal pressure equals the average of input pressure and return pressure.

$$P_{\text{seal}} = \frac{P_{\text{in}} + P_{\text{return}}}{2}$$



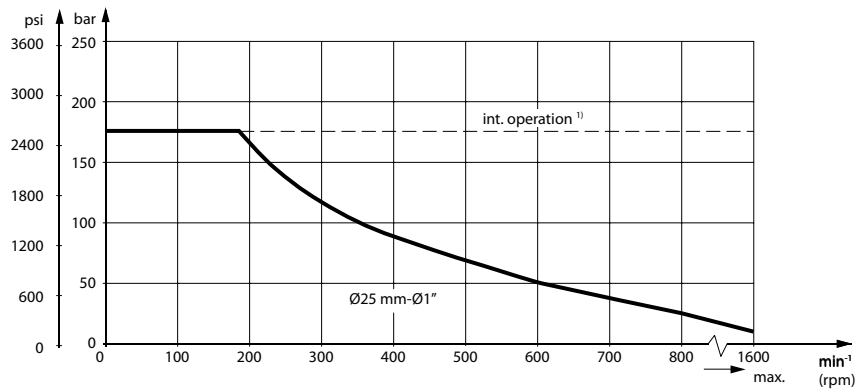
151-1743.10

VMP with HPS and drain connection:
 The shaft seal pressure equals the pressure in the drain line.



151-1855.10

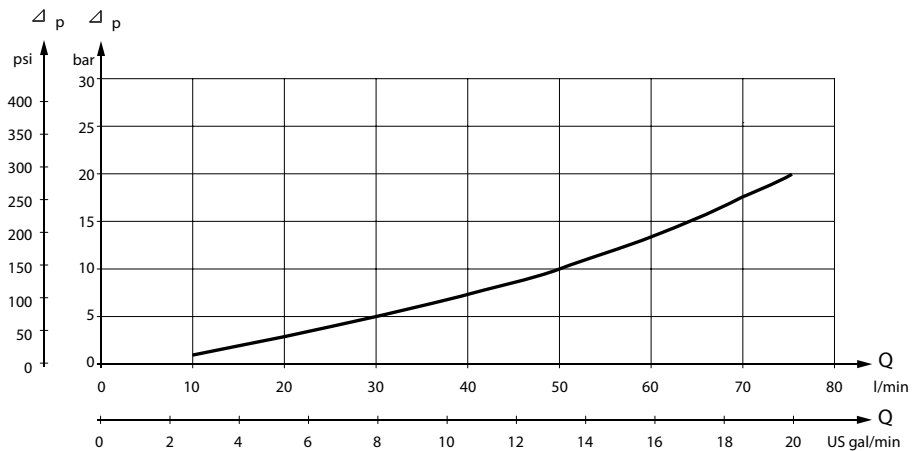
Max. permissible shaft seal pressure



P301 437

Please check motor pressure according to data on page 8.

Pressure Drop in Motor



P301 435

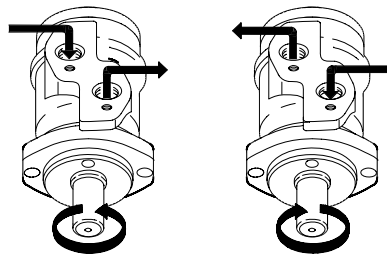
The curve applies to an unloaded motor shaft and an oil viscosity of 35 mm²/s [165 SUS]

Oil Flow in Drain Line

The table shows the max. oil flow in the drain line at a return pressure less than 5-10 bar [75-150 psi].

Under preparation

Direction of Shaft Rotation



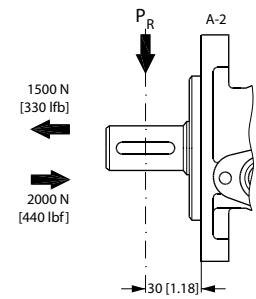
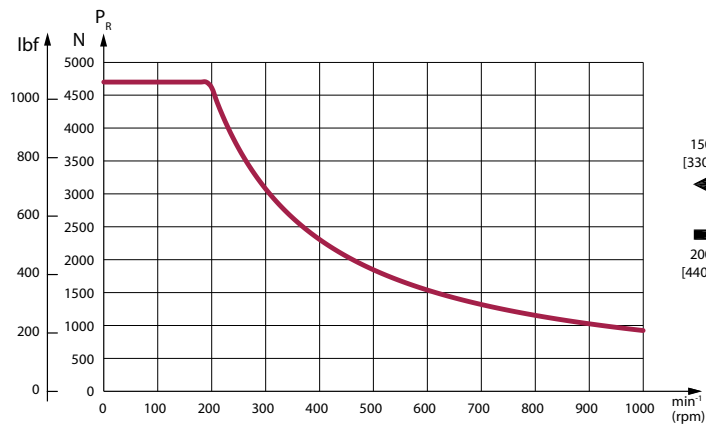
Technical Data

The permissible radial shaft load (P_R) depends on

- n = Speed (min^{-1})
- L = Distance from the point of load to the mounting flange (mm, in)

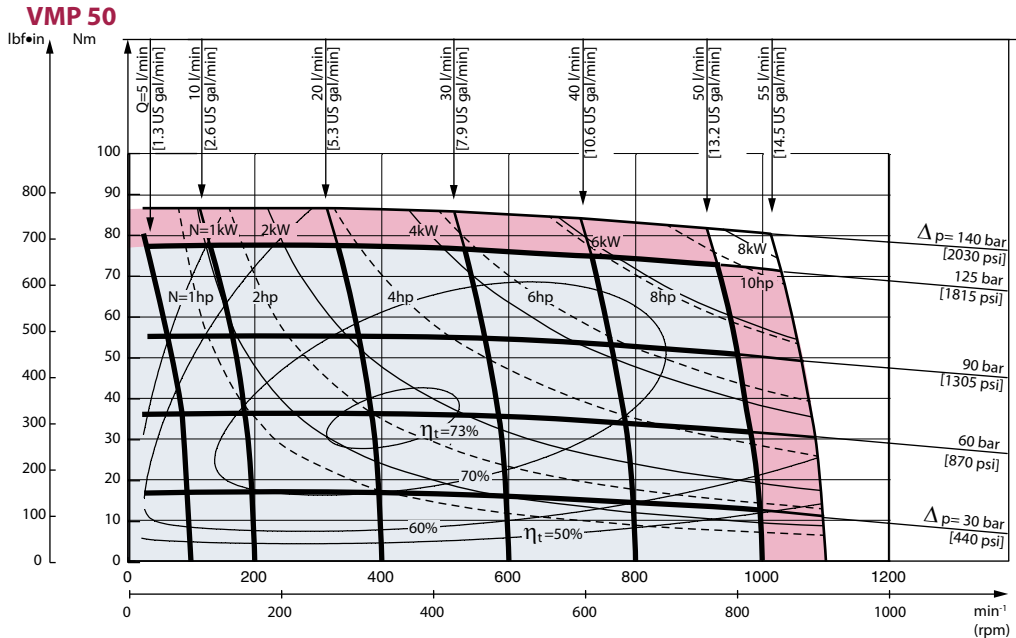
Permissible shaft load (P_R) - l in mm	$\frac{800}{n} \cdot \frac{150000 \text{ N}^*}{100 + L}$
Permissible shaft load (P_R) - l in inch	$\frac{800}{n} \cdot \frac{1330 \text{ lbf}^*}{3.94 + L}$

* $n \geq 200 \text{ min}^{-1}$ [rpm]; $\leq 55 \text{ mm}$ [2.2 in]
 $n < 200 \text{ min}^{-1}$ [rpm]; $= > P_{R\text{max}} = 4615 \text{ N}$ [1037 lbf]

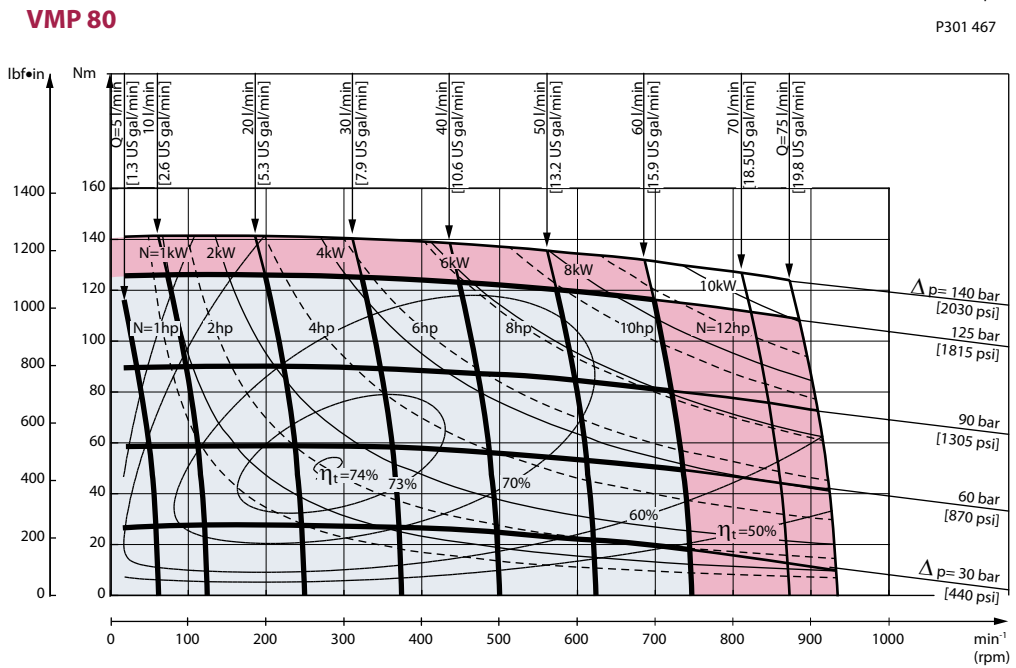


P301 436

Function Diagrams



P301 467



P301 468

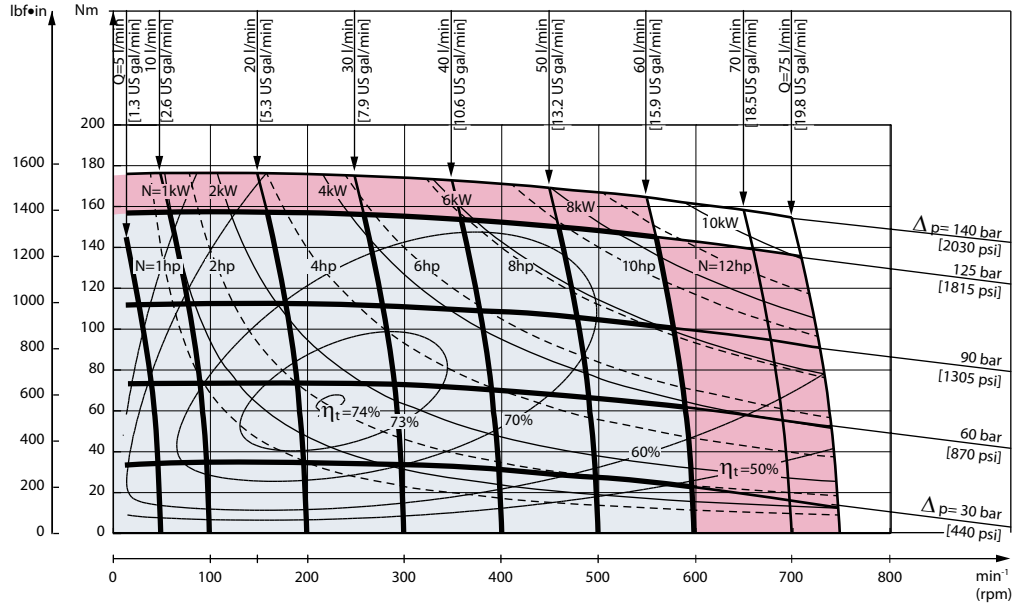
Explanation of function diagram use, basis and conditions can be found on page 4.

- Continuous range
- Intermittent range (max. 10% operation every minute)

Intermittent pressure drop and oil flow must not occur simultaneously.

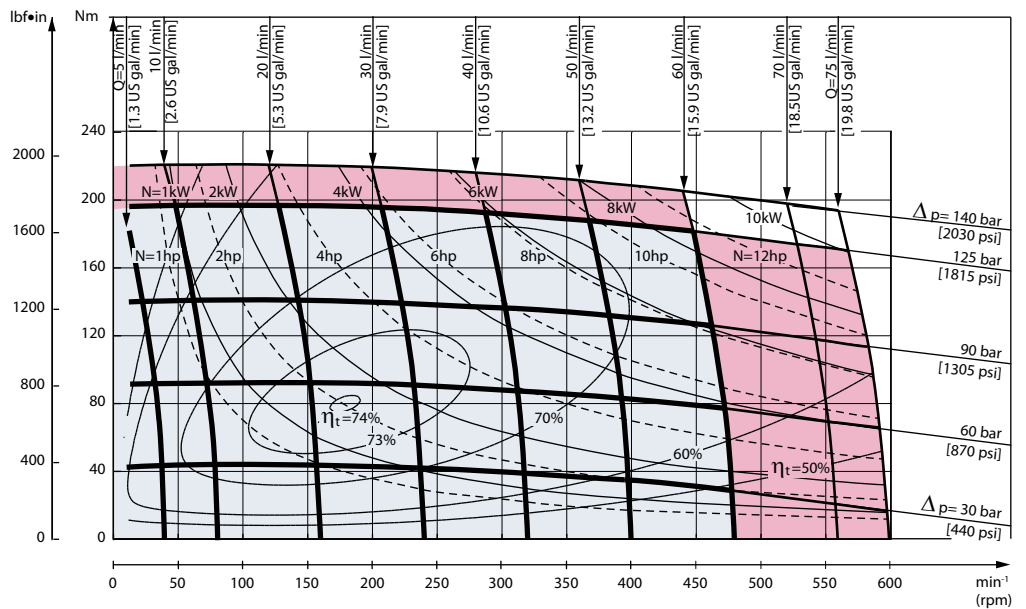
Function Diagrams

VMP 100



P301 469

VMP 125



P301 470

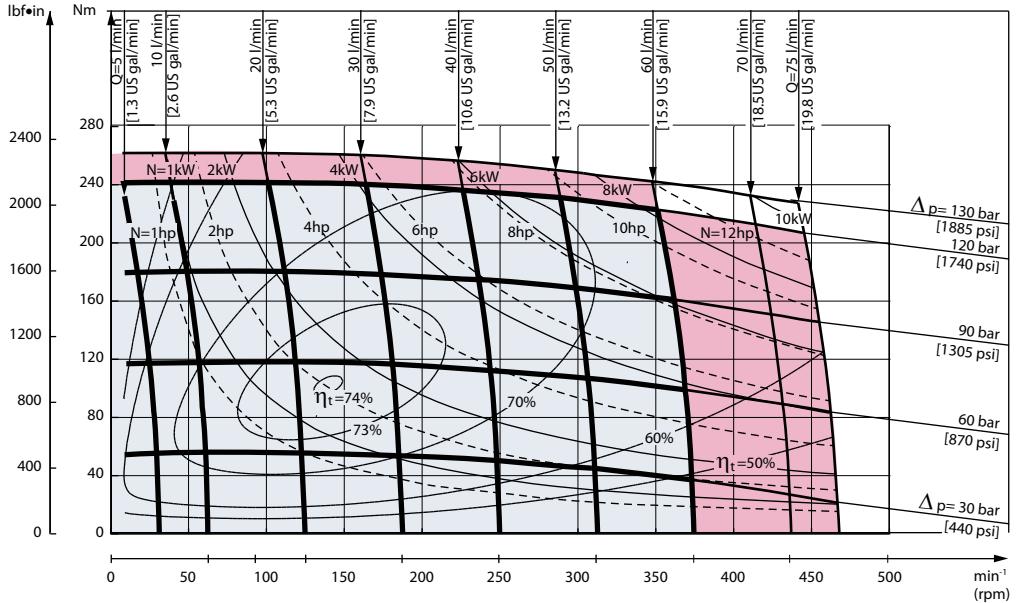
Explanation of function diagram use, basis and conditions can be found on page 4.

- Continuous range
- Intermittent range (max. 10% operation every minute)

Intermittent pressure drop and oil flow must not occur simultaneously.

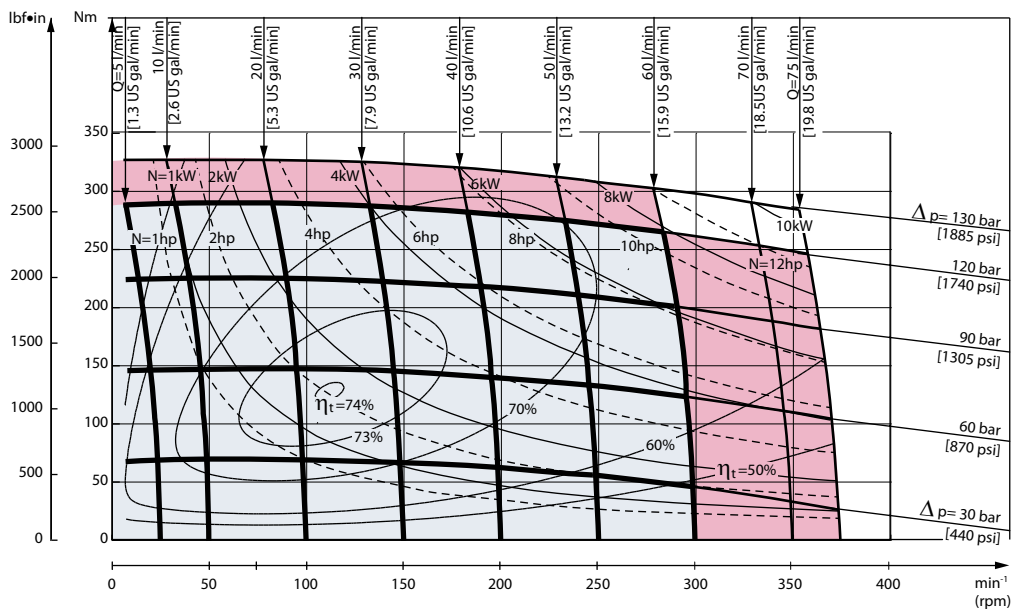
Function Diagrams

VMP 160



P301 471

VMP 200



P301 472

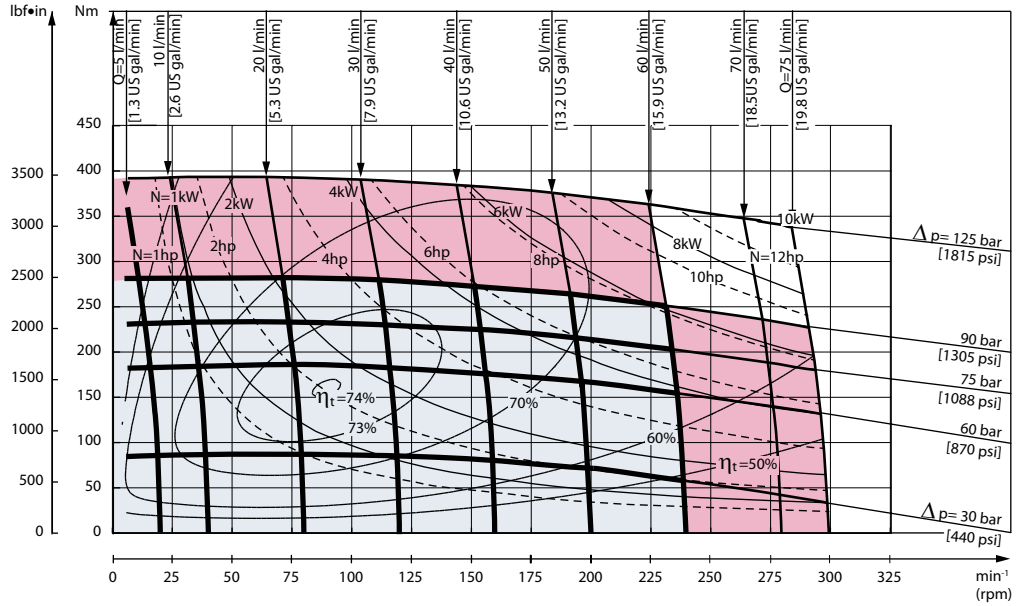
Explanation of function diagram use, basis and conditions can be found on page 4.

- Continuous range
- Intermittent range (max. 10% operation every minute)

Intermittent pressure drop and oil flow must not occur simultaneously.

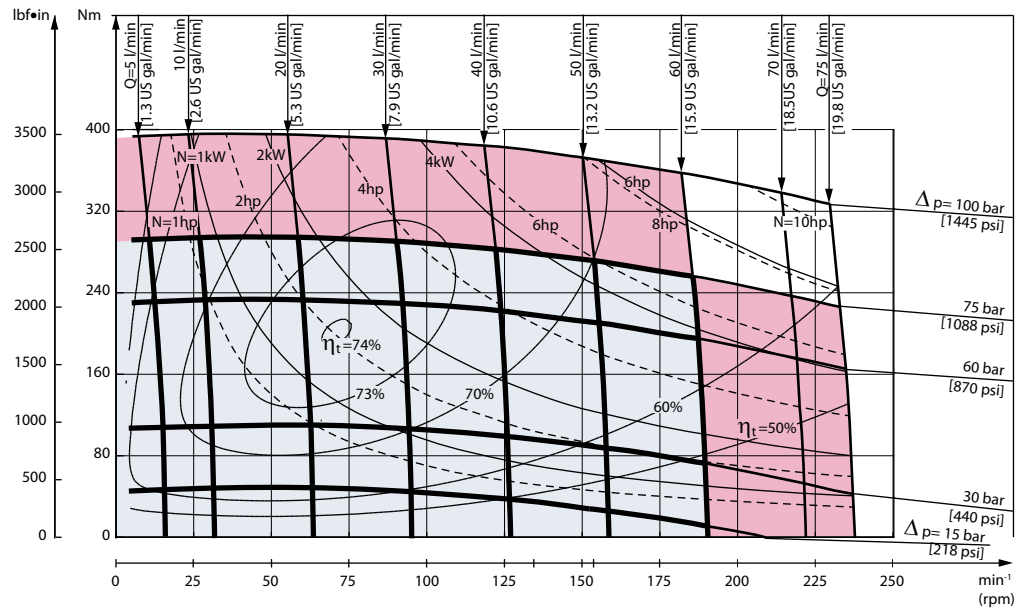
Function Diagrams

VMP 250



P301 473

VMP 315



P301 474

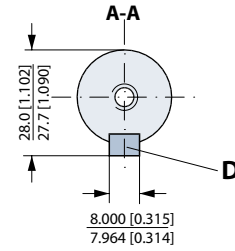
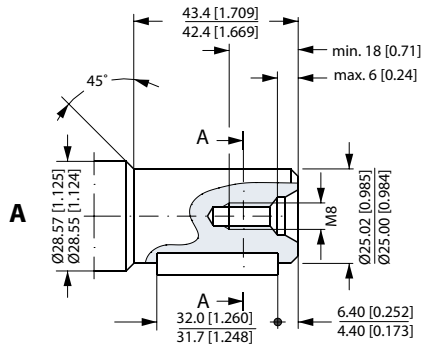
Explanation of function diagram use, basis and conditions can be found on page 4.

- Continuous range
- Intermittent range (max. 10% operation every minute)

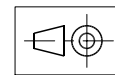
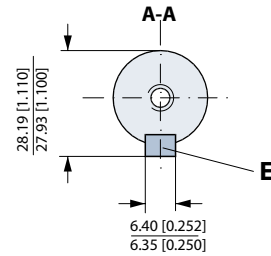
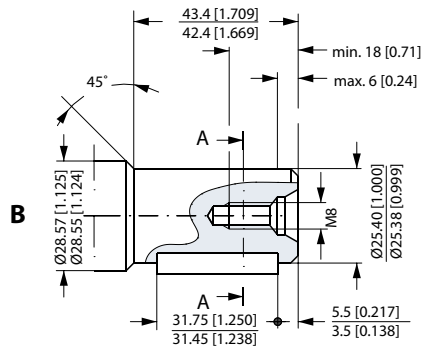
Intermittent pressure drop and oil flow must not occur simultaneously.

Shaft Version

- A: Cylindrical shaft
25 mm
D: Parallel key
A 8 x 7 x 32
DIN 6885

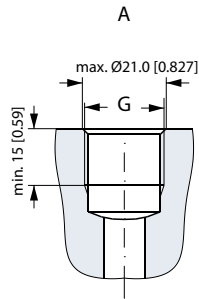


- B: Cylindrical shaft
1 in
E: Parallel key
1/4 x 1/4 x 11/4 in
B.S. 46

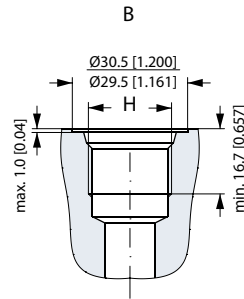


P301 451

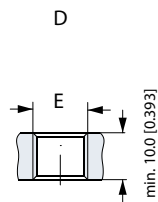
Port Thread Versions



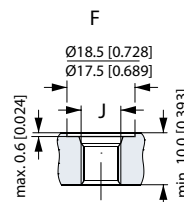
A: G main ports
 G: ISO 228/1 - G $\frac{1}{2}$



B: UNF main ports
 H: $\frac{7}{8}$ -14 UNF
 O-ring boss port



D: G drain port
 E: ISO 228/1 - G $\frac{1}{4}$

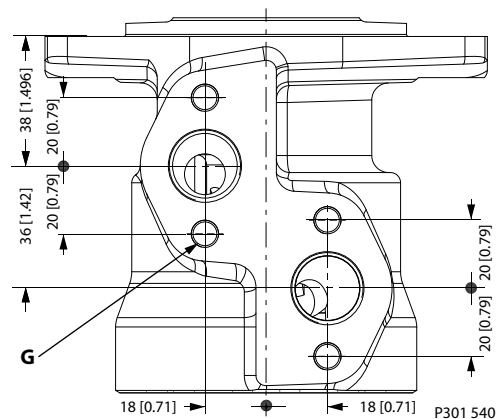


F: UNF drain port
 J: $\frac{7}{16}$ -20 UNF
 O-ring boss port

P301 452

Manifold Mount

European version

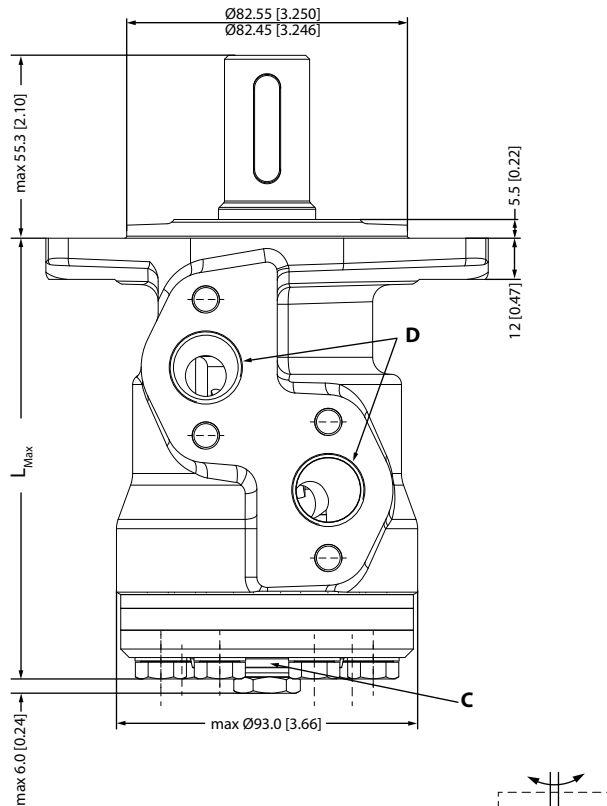


G: M8. 13 [0.512] deep. (4 pcs.)

Dimensions

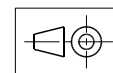
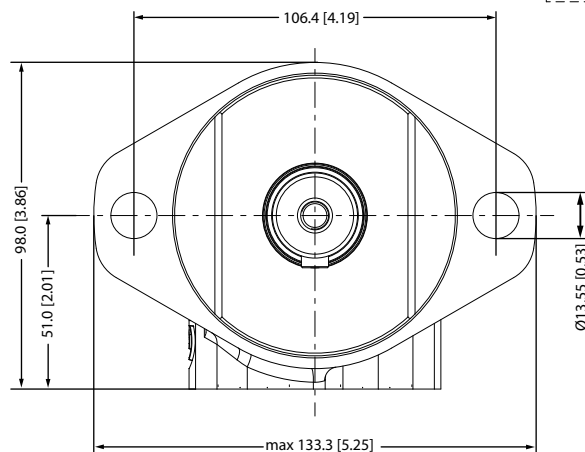
Side port version with 2 hole oval mounting flange (A2-flange).

Type	L _{MAX} mm [in]	Weight kg [lb]
VMP 50	132.0 [5.20]	4.9 [10.8]
VMP 80	136.0 [5.35]	5.0 [11.0]
VMP 100	138.5 [5.45]	5.2 [11.5]
VMP 125	142.2 [5.60]	5.3 [11.7]
VMP 160	146.3 [5.76]	5.5 [12.1]
VMP 200	151.5 [5.96]	5.7 [12.6]
VMP 250	158.0 [6.22]	5.9 [13.0]
VMP 315	166.5 [6.56]	6.2 [13.7]



C: Drain port
 ISO 228/1 - G 1/4

D: Port connection
 ISO 228/1 - G 1/2

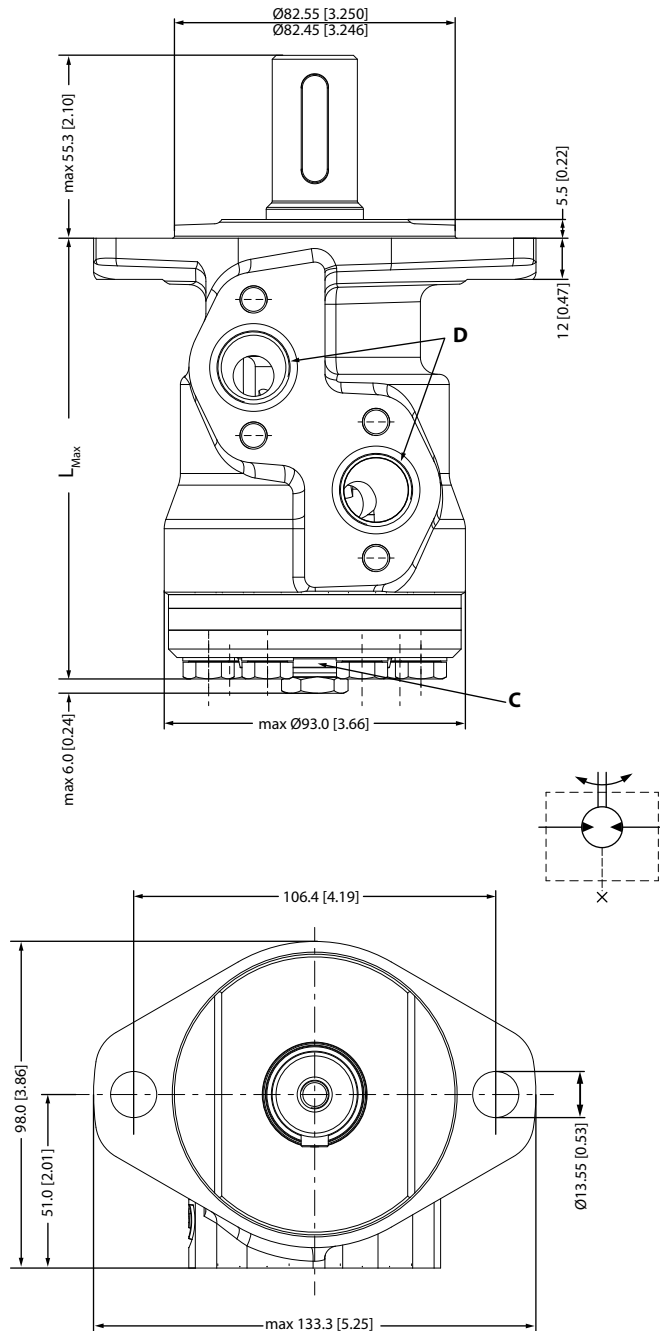


P301 460

Dimensions

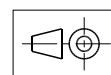
Side port version with 2 hole oval mounting flange (A2-flange).

Type	L _{MAX} mm [in]	Weight kg [lb]
VMP 50	132.0 [5.20]	4.9 [10.8]
VMP 80	136.0 [5.35]	5.0 [11.0]
VMP 100	138.5 [5.45]	5.2 [11.5]
VMP 125	142.2 [5.60]	5.3 [11.7]
VMP 160	146.3 [5.76]	5.5 [12.1]
VMP 200	151.5 [5.96]	5.7 [12.6]
VMP 250	158.0 [6.22]	5.9 [13.0]
VMP 315	166.5 [6.56]	6.2 [13.7]



C: Drain port
 7/16-20 UNF
 O-ring boss port

D: Port connection
 7/8-14 UNF
 O-ring boss port



P301 541



Products we offer:

- Bent Axis Motors
- Closed Circuit Axial Piston Pumps and Motors
- Displays
- Electrohydraulic Power Steering
- Electrohydraulics
- Hydraulic Power Steering
- Integrated Systems
- Joysticks and Control Handles
- Microcontrollers and Software
- Open Circuit Axial Piston Pumps
- Orbital Motors
- PLUS+1™ GUIDE
- Proportional Valves
- Sensors
- Steering
- Transit Mixer Drives

Members of the Sauer-Danfoss Group:

Comatrol

www.comatrol.com

Schwarz Müller-Inverter

www.schwarzmueller-inverter.com

Turolla

www.turollaocg.com

Valmova

www.valmova.com

Hydro-Gear

www.hydro-gear.com

Sauer-Danfoss-Daikin

www.sauer-danfoss-daikin.com

Sauer-Danfoss is a global manufacturer and supplier of high-quality hydraulic and electronic components. We specialize in providing state-of-the-art technology and solutions that excel in the harsh operating conditions of the mobile off-highway market. Building on our extensive applications expertise, we work closely with our customers to ensure exceptional performance for a broad range of off-highway vehicles.

We help OEMs around the world speed up system development, reduce costs and bring vehicles to market faster.

Sauer-Danfoss – Your Strongest Partner in Mobile Hydraulics.

Go to www.sauer-danfoss.com for further product information.

Wherever off-highway vehicles are at work, so is Sauer-Danfoss.

We offer expert worldwide support for our customers, ensuring the best possible solutions for outstanding performance. And with an extensive network of Global Service Partners, we also provide comprehensive global service for all of our components.

Please contact the Sauer-Danfoss representative nearest you.

Local address:

Sauer-Danfoss (US) Company 2800 East 13th Street Ames, IA 50010, USA Phone: +1 515 239 6000 Fax: +1 515 239 6618	Sauer-Danfoss ApS DK-6430 Nordborg, Denmark Phone: +45 7488 4444 Fax: +45 7488 4400
Sauer-Danfoss GmbH & Co. OHG Postfach 2460, D-24531 Neumünster Krokamp 35, D-24539 Neumünster, Germany Phone: +49 4321 871 0 Fax: +49 4321 871 122	Sauer-Danfoss-Daikin LTD. Shin-Osaka TERASAKI 3rd Bldg. 6F 1-5-28 Nishimiyahara, Yodogawa-ku Osaka 532-0004, Japan Phone: +81 6 6395 6066 Fax: +81 6 6395 8585