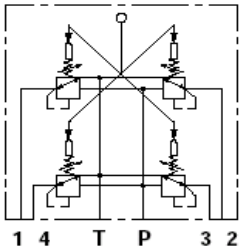


## HYDRAULIC PILOT VALVES SVM400 Series

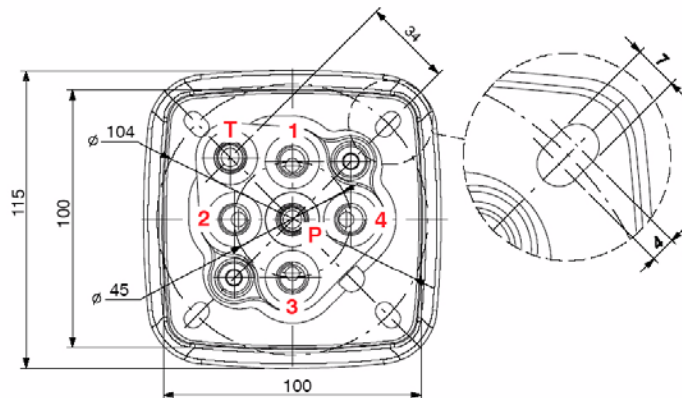
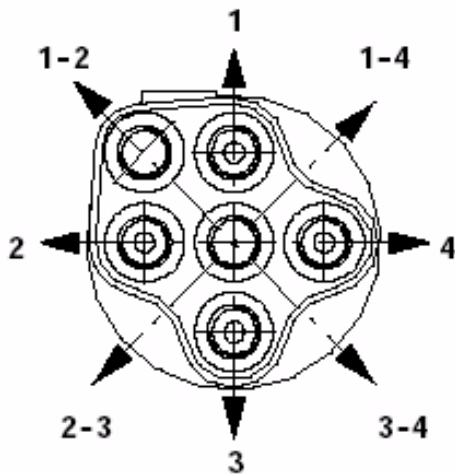
Monoblock Dual Axis Joystick Hydraulic Pilot Valve with 1 lever and 4 workports for simultaneous operation of 2 valve sections.



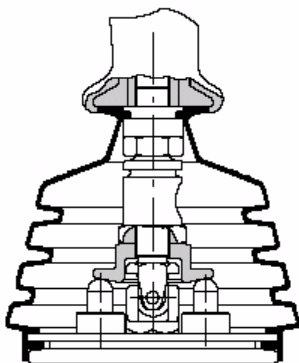
Type MODEL	MIN Flow	MAX Flow	Max Press on 'P' BAR	Max Back Press on 'T' BAR	List Price
	L/MIN	L/MIN			
SVM400/01B/01W-M001A	5	20	100	3	\$POA

### Movements

The above unit is fitted with spring Curve Kit '001A' = 5.8 to 22 BAR - Please refer to Page A53 for other available Spring Curve Kits.

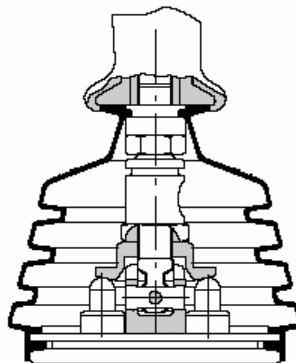


TYPE - 01



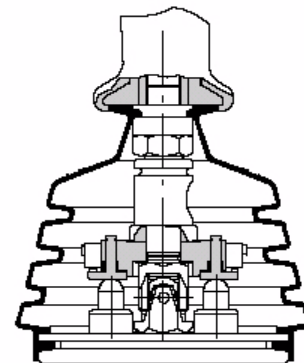
Spring return in neutral position.

TYPE - 09



Cross movement selector.

TYPE - 16



Movement detection on each port.